

MODULEFORM

LAVALA



MODULEFORM

Building specification:

Dimension (LxWxH): 960x430x350 cm

Surface: 41,28 m²

Usable area: 37,30 m²

Functional layout:

Living room

Kitchen

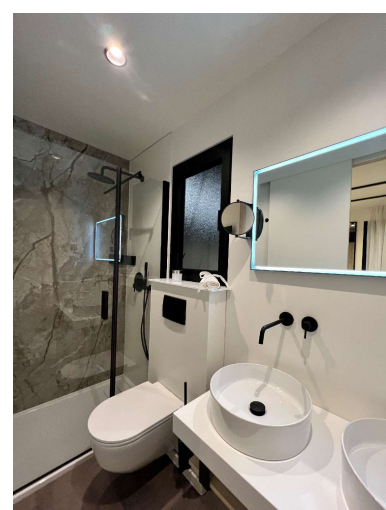
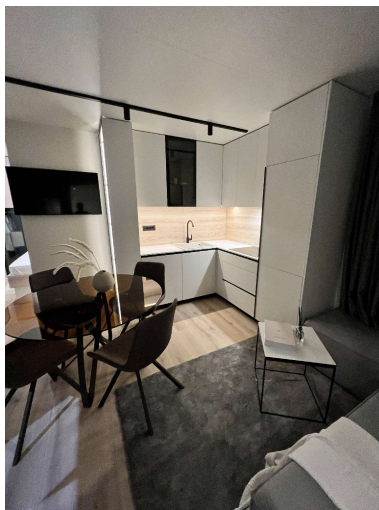
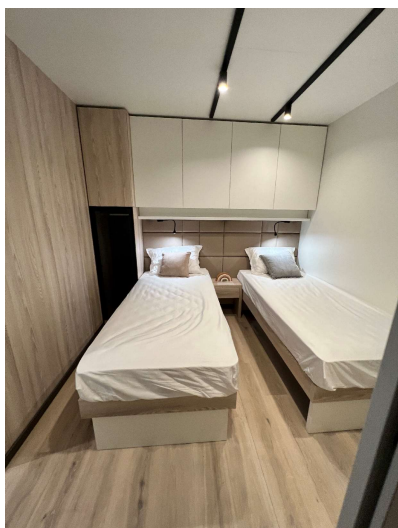
Master bedroom

Children bedroom

Bathroom 2x

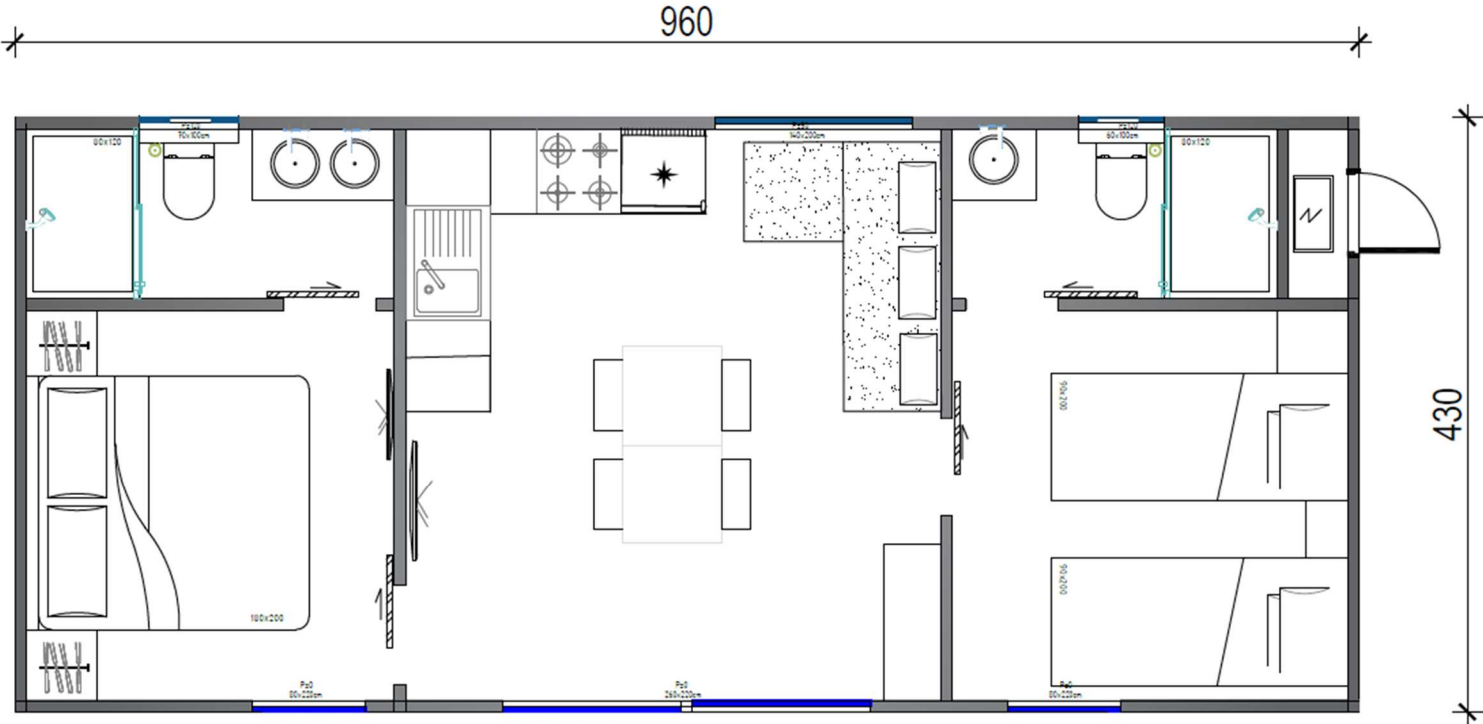
Terrace: optionaly

EXTERIOR	Construction	Steel frame, wooden construction
	Facade	Plastered facade / HPL exterior boards
	Roof	Aluminum profilated panels
	Thermal insulation	Mineral wool 0.038 W /mK / Foam
	Glass openings	Aluminum profiles with thermal block $U_w \leq 1,3 \text{ W/m}^2\text{K}$
	Terrace	Optionaly
INTERIOR	Walls	Plywood boards
	Ceilings	Plywood boards
	Floors	LVT flooring
	Furniture	Fully equipped, ready to move in
	Bathroom	Fully equipped
INSTALATIONS	Electrical installation	Modular type light switches, complete with mounting box, bracket and frame.
	Water and sewage installation	With automatic fuses and FID switch. Light switches, sockets and lighting.
	Ventilation system	Natural air recovery; Air conditioner
	Heating system	Optionaly

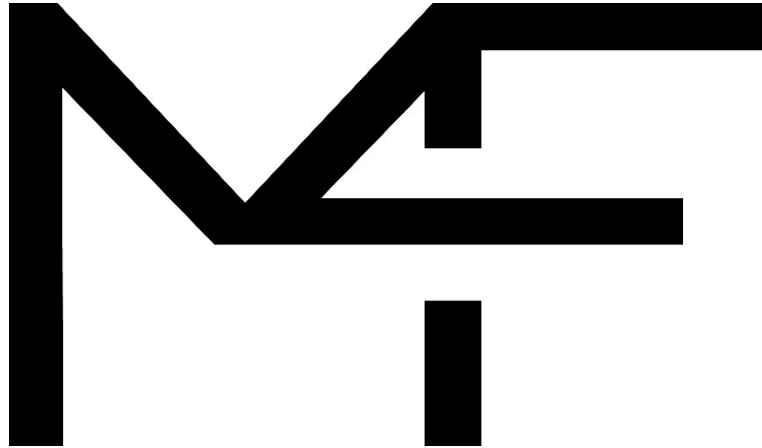


MODULEFORM

Layout:



MODULEFORM



CUSTOM MODULAR BUILDINGS

Contact:

module@moduleform.com

+385 49 342 439

Lepajci 5

49000 Krapina

Croatia

The contents of this conceptual design and its attachments is privileged and intended only for the use of the individual or entity to whom it is addressed. It may contain confidential or legally privileged information. If you have received it by mistake, please notify us immediately by email reply and delete it from your system. If you are not the intended recipient you are notified that disclosing, copying, distributing or taking action in reliance on the contents of this communication is strictly prohibited and may be unlawful. We reserve copyright to this material. Copying both in whole and in part is forbidden without written permission from MODULEFORM.